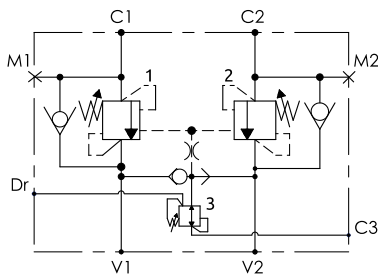


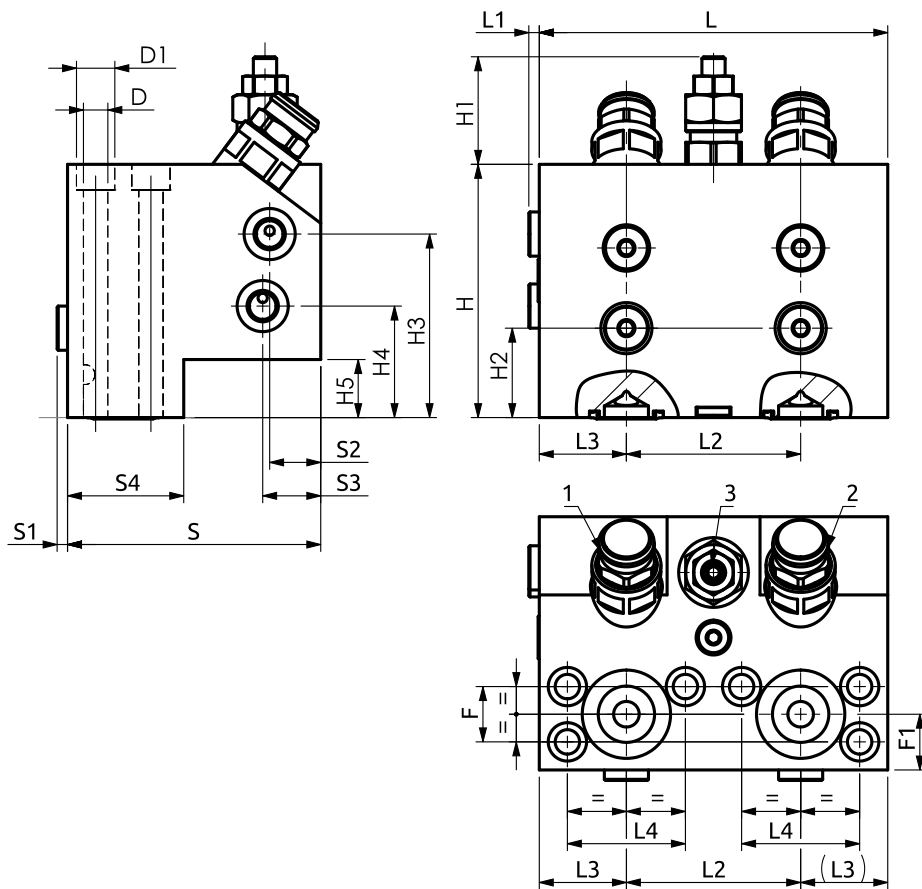
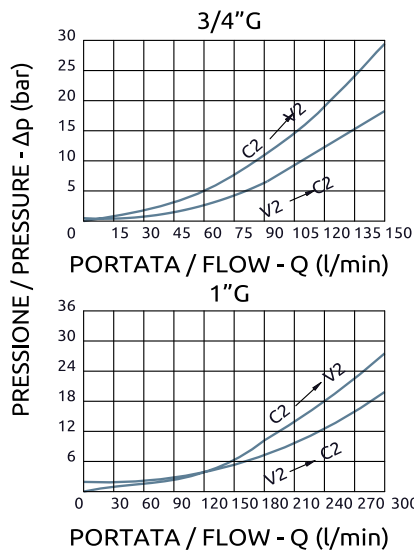


# Valvola di blocco bilanciata doppia flangiabile per motori idraulici

## Dual overcentre valve, flangeable for hydraulic motors



CURVE CARATTERISTICHE  
PERFORMANCE CURVES



Corpo in acciaio / Steel body

<b>A078281.03.00</b>	150	4.5	75	37.5	50.8	109	4.5	22	25	50	109	~46	38.5	79	48	25	23.8	24	Ø10.5 (n.6)	Ø16.5	10.8 Kg
<b>A078281.02.00</b>	150	4.5	75	37.5	50.8	109	4.5	22	25	50	109	~46	38.5	79	48	25	23.8	24	Ø10.5 (n.6)	Ø18.5	10.8 Kg
<b>A078281.07.00</b>	165	4.5	84	40.5	57.2	140	4.5	20	20	64	139	~46	50	115.5	85	25	27.7	33	Ø10.5 (n.8)	Ø18.5	20.6 Kg
<b>COD.</b>	<b>L</b>	<b>L1</b>	<b>L2</b>	<b>L3</b>	<b>L4</b>	<b>S</b>	<b>S1</b>	<b>S2</b>	<b>S3</b>	<b>S4</b>	<b>H</b>	<b>H1</b>	<b>H2</b>	<b>H3</b>	<b>H4</b>	<b>H5</b>	<b>F</b>	<b>F1</b>	<b>D</b>	<b>D1</b>	<b>Weight</b>

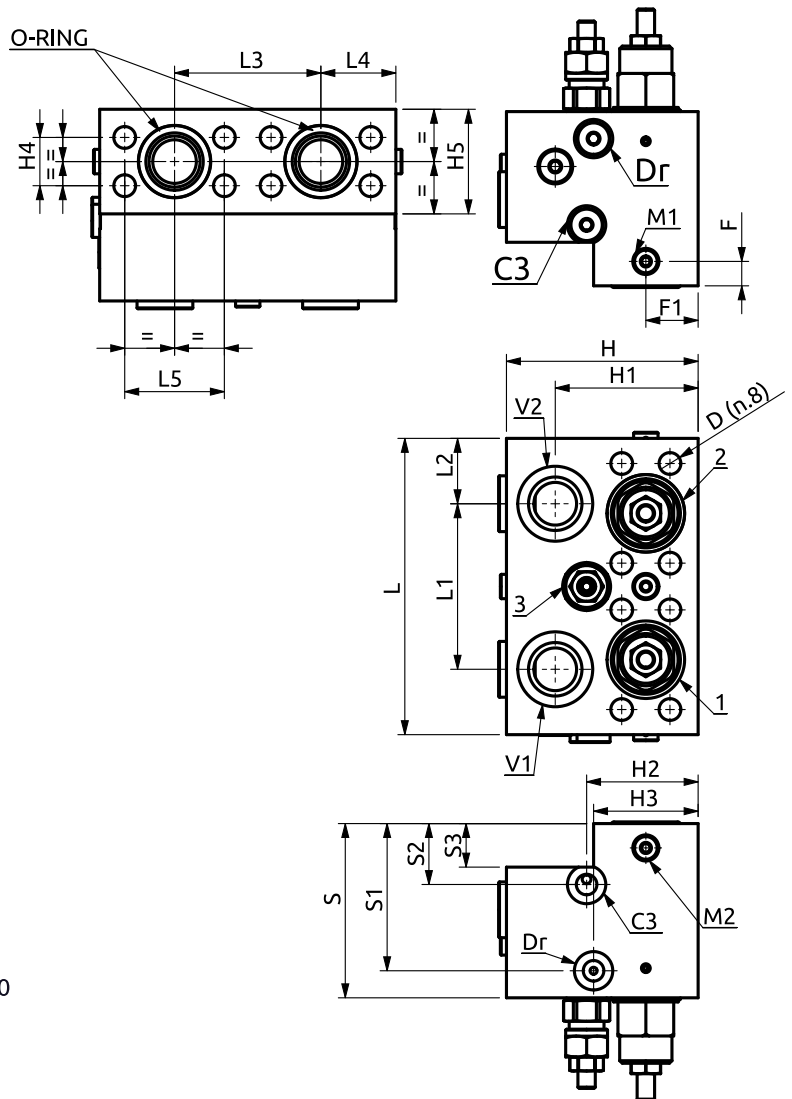
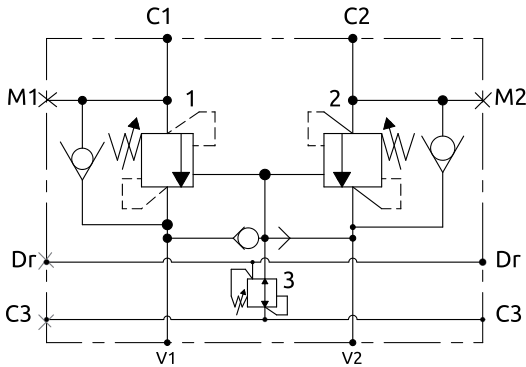


DESCRIZIONE	DESCRIPTION
Valvola di blocco bilanciata doppia con flangiatura per motori idraulici SH7V e F12.	Dual flangeable overcenter valve for hydraulic motors SH7V and F12.

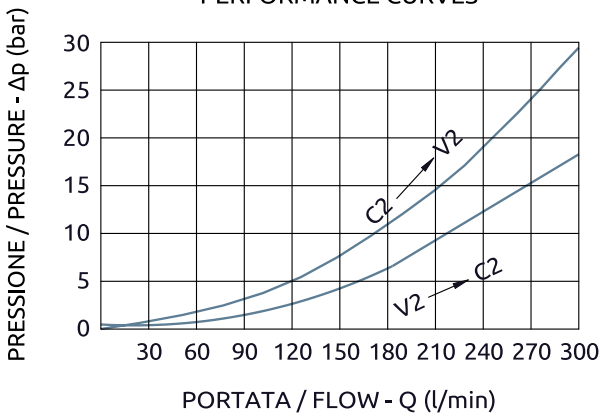
Codice Ordinazione	Rapporto di Pilotaggio	Campo di Taratura	Taratura Standard	Incremento per Giro	Portata Massima	Pressione Max	Dimensione Porte		
Ordering Code	Pilot Ratio	Pressure Range	Standard Setting	Pressure Increase	Max Flow	Max Pressure	Port Size		
A078281.03.00	4:1	1	100-420 bar	380 bar	82 bar/turn	150 L/min	420 bar	C1, C2	3/4"SAE6000
		2	100-420 bar	380 bar	82 bar/turn			V1, V2	3/4"G
	-	3	15-45 bar	30 bar	10.5 bar/turn			M1, M2, C3, Dr	1/4"G
A078281.02.00	8:1	1	100-420 bar	380 bar	82 bar/turn	150 L/min	420 bar	C1, C2	3/4"SAE6000
		2	100-420 bar	380 bar	82 bar/turn			V1, V2	3/4"G
	-	3	15-45 bar	30 bar	10.5 bar/turn			M1, M2, C3, Dr	1/4"G
A078281.07.00	6:1	1	150-420 bar	380 bar	95 bar/turn	300 L/min	420 bar	C1, C2	1"SAE6000
		2	150-420 bar	380 bar	95 bar/turn			V1, V2	1"G
	-	3	15-45 bar	30 bar	10.5 bar/turn			M1, M2, C3, Dr	1/4"G



Valvola di blocco bilanciata doppia flangiabile per motori idraulici  
Dual overcentre valve, flangeable for hydraulic motors

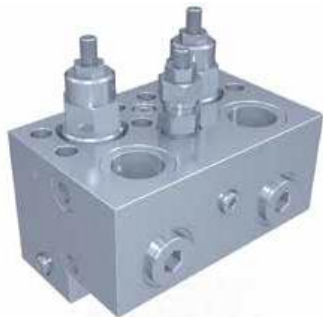


CURVE CARATTERISTICHE  
PERFORMANCE CURVES



Corpo in acciaio / Steel body

A078481.06.00	170	95	37.5	84	43	57.2	100	84.5	35	25	110	82	64	60	27.7	60	14	30	Ø12.5	10 kg
A078581.03.00	200	110	45	99	50.5	66.7	129	109	60	40	130	95	65	60	31.8	60	40	30	Ø14.5	12 kg
COD.	L	L1	L2	L3	L4	L5	S	S1	S2	S3	H	H1	H2	H3	H4	H5	F	F1	D	WEIGHT

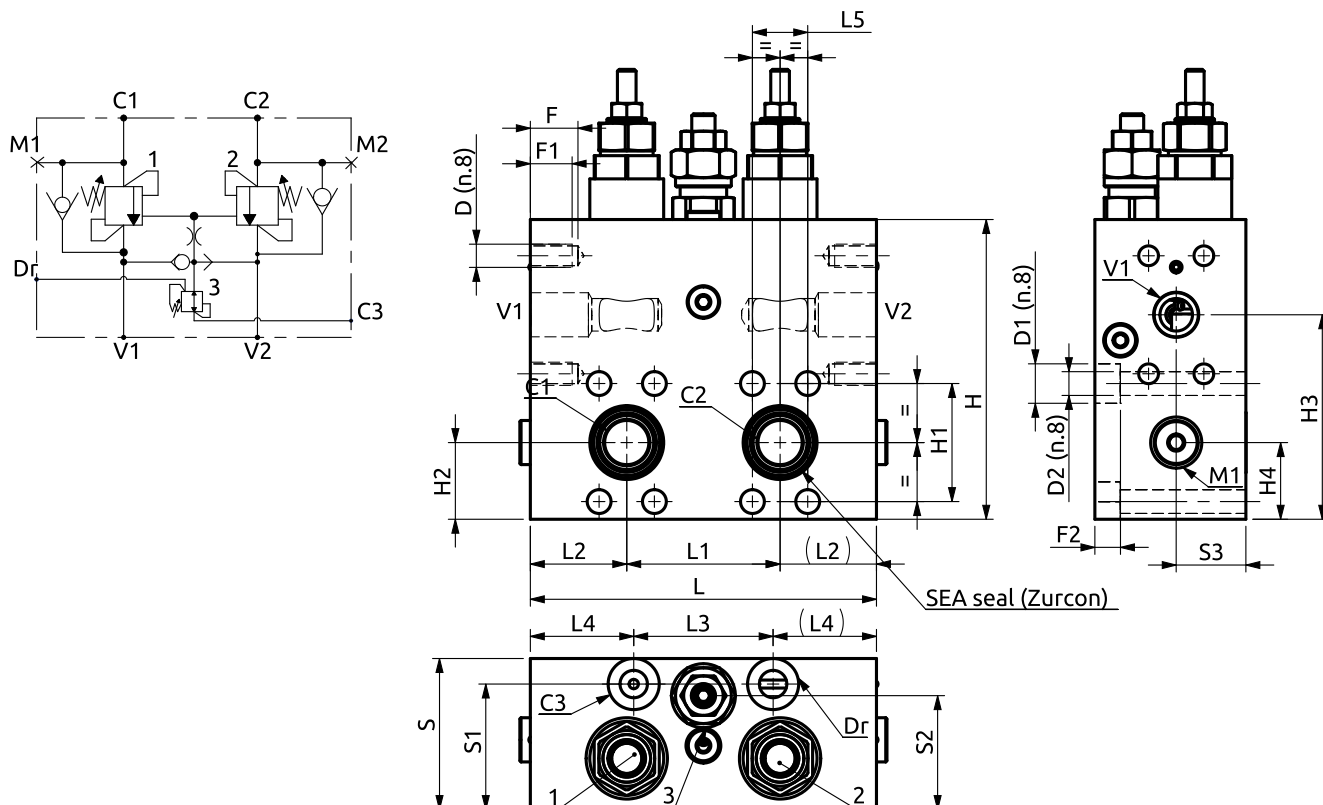


DESCRIZIONE	DESCRIPTION
Valvola di blocco bilanciata doppia con flangiatura per motori idraulici SH11C.	Dual flangeable overcenter valve for hydraulic motors SH11C.

Codice Ordinazione	Rapporto di Pilotaggio	Campo di Taratura	Taratura Standard	Incremento per Giro	Portata Massima	Pressione Max	Dimensione Porte
Ordering Code	Pilot Ratio	Pressure Range	Standard Setting	Pressure Increase	Max Flow	Max Pressure	Port Size
A078481.06.00	8:1	1,2 140-350 bar	350 bar	130 bar/turn	300 l/min	350 bar	V1, V2, C1, C2
	-	3 10-70 bar	20 bar	16.5 bar/turn			M1, M2, C3, Dr
A078581.03.00	8:1	1,2 140-350 bar	350 bar	130 bar/turn	300 l/min	350 bar	V1, V2, C1, C2
	-	3 15-45 bar	20 bar	10.5 bar/turn			M1, M2, C3, Dr



## Valvola di blocco bilanciata doppia flangiabile per motori idraulici Dual overcenter valve, flangeable for hydraulic motors



Corpo in acciaio / Steel body

A078281.01.00	149	66	41.5	60	44.5	23.8	65	54	49	30	129	50.8	33	88	33	20.5	18	11	M10	Ø17	Ø10.5	9 kg
A078481.01.00	180	82	49	60	60	27.8	75	64	57	12	155	57.2	41	107	31	22	20	12	M12	Ø19	Ø12.5	15 kg
A078481.05.00	180	75	52.5	60	60	27.8	75	64	56.5	35	155	57.2	41	107	41	22	20	12	M12	Ø19	Ø12.5	15 kg
A078581.01.00	200	92	54	60	70	31.8	75	64	57	12	160	66.7	44	112	34.5	24	22	14	M14x2	Ø22	Ø14.5	17 kg
A078581.02.00	200	83	58.5	60	70	31.8	75	64	58	36	160	66.7	44	112	44	28	26	12	M14x2	Ø22	Ø14.5	15 kg
<b>COD.</b>	<b>L</b>	<b>L1</b>	<b>L2</b>	<b>L3</b>	<b>L4</b>	<b>L5</b>	<b>S</b>	<b>S1</b>	<b>S2</b>	<b>S3</b>	<b>H</b>	<b>H1</b>	<b>H2</b>	<b>H3</b>	<b>H4</b>	<b>F</b>	<b>F1</b>	<b>F2</b>	<b>D</b>	<b>D1</b>	<b>D2</b>	<b>WEIGHT</b>



### DESCRIZIONE

Valvola di blocco bilanciata doppia con flangiatura per motori idraulici SH7V e F12.

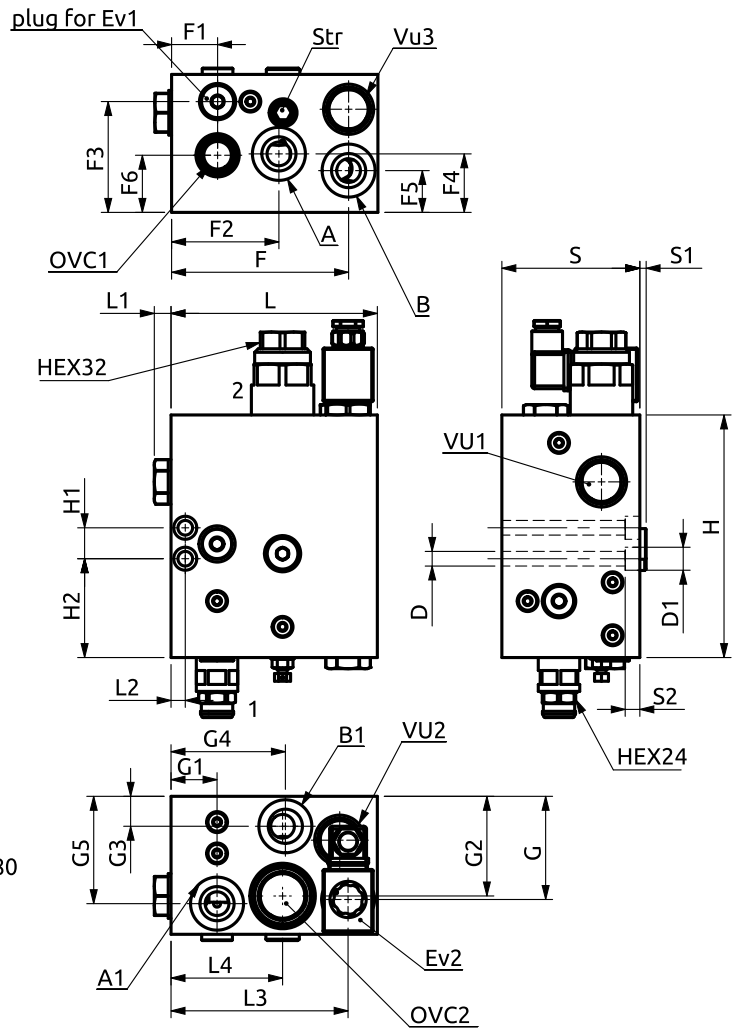
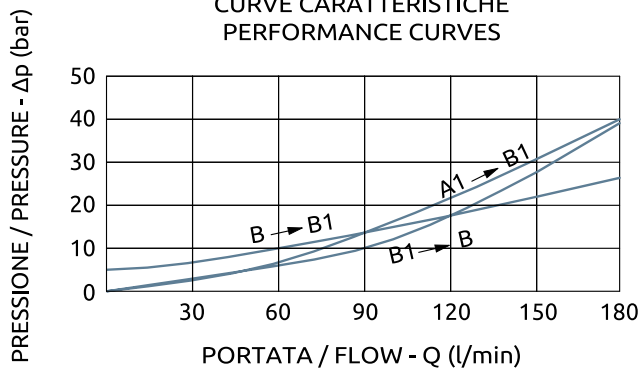
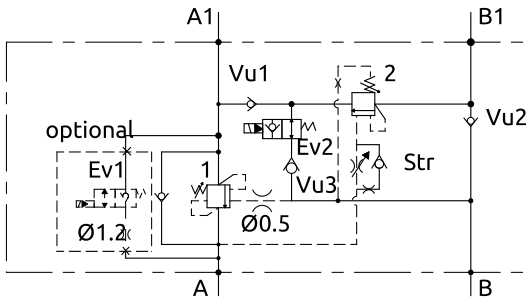
### DESCRIPTION

Dual flangeable overcenter valve for hydraulic motors SH7V and F12.

Codice Ordine	Rapporto di Pilotaggio	Campo di Taratura	Taratura Standard	Incremento per Giro	Portata Massima	Pressione Max	Dimensione Porte
Ordering Code	Pilot Ratio	Pressure Range	Standard Setting	Pressure Increase	Max Flow	Max Pressure	Port Size
A078281.01.00	4:1	1,2 180-350 bar	300 bar	88 bar/turn	120 l/min	350 bar	V1, V2, C1, C2 3/4"SAE6000
	-	3 35-80 bar	70 bar	25 bar/turn			M1, M2, C3, Dr 1/4"G
A078481.01.00	4.5:1	1,2 140-350 bar	350 bar	130 bar/turn	300 l/min	350 bar	V1, V2, C1, C2 1"SAE6000
	-	3 10-45 bar	20 bar	10.5 bar/turn			M1, M2, C3, Dr 1/4"G
A078481.05.00	4.5:1	1,2 140-350 bar	350 bar	130 bar/turn	300 l/min	350 bar	V1, V2, C1, C2 1"SAE6000
	-	3 10-70 bar	70 bar	25 bar/turn			M1, M2, C3, Dr 1/4"G
A078581.01.00	4.5:1	1,2 140-350 bar	350 bar	130 bar/turn	300 l/min	350 bar	V1, V2, C1, C2 1-1/4"SAE6000
	-	3 10-45 bar	20 bar	10.5 bar/turn			M1, M2, C3, Dr 1/4"G
A078581.02.00	4.5:1	1,2 140-350 bar	350 bar	130 bar/turn	300 l/min	350 bar	V1, V2, C1, C2 1-1/4"SAE6000
	-	3 10-70 bar	70 bar	25 bar/turn			M1, M2, C3, Dr 1/4"G



Valvola di blocco bilanciata doppia in linea con circuito rigenerativo serie 210  
Dual overcenter valve in line with regenerative circuit "210 series"



Corpo in alluminio / Aluminium body

<b>B070660.04.00</b>	148	12	10.2	127	80	99	4.5	10.5	174	22.2	71	127	33	77	79.5	42	30	41	74	33	71.5	21.5	82	77	Ø10.5	Ø16.5
<b>COD.</b>	L	L1	L2	L3	L4	S	S1	S2	H	H1	H2	F	F1	F2	F3	F4	F5	F6	G	G1	G2	G3	G4	G5	D	D1



DESCRIZIONE	DESCRIPTION
-------------	-------------

La valvola oltre alle normali funzioni delle valvole di blocco permette di sommare l'olio scaricato dal lato stelo alla portata della pompa, permettendo di velocizzare l'uscita stelo. Durante lo sfilo la spinta del cilindro equivale alla sola pressione agente sulla sezione dello stelo.

The valve combines the normal functions of the overcenter valves with the regenerative function, adding the return flow from the rod side to the pump flow, to reduce the extension time. During the extension, the thrust of the cylinder matches only the pressure operating on the rod section.

CODICE ORDINAZIONE PIOMBATURA	SEALING ORDERING CODE
----------------------------------	--------------------------

916013

Ordine	Ratio	Pressure Range	Standard Setting	Pressure Increase	Max Flow	Max Pressure	Port Size	Weight
B070660.04.00	4:1	1 100-350 bar 2 170-350 bar	350 bar	108 bar/turn 70 bar/turn	180 l/min	350 bar	3/4"G	7.8 kg